

ALDGATE – HIGHWAY CHANGES AND PUBLIC REALM PROJECT

MILESTONE PROJECT UPDATE EVENT
STEVE PRESLAND: PROJECT EXECUTIVE Strategic influence
 Invite: Members, Businesses, CoL Directors, LBTH Politicians, TfL Directors

PROJECT BOARD
IAIN SIMMONS: PROJECT DIRECTOR / CHAIRMAN (CoL)

- Meet every eight weeks
- Agree programme and milestones
- Agree roles & responsibilities
- Make strategic decisions - decide overall direction and management of the project
- Agree Terms of Reference and Desired Outcomes Commit project resources and dedicate time to the project meetings
- Maintain a proactive approach to the project
- Authority to decide for their individual organisation

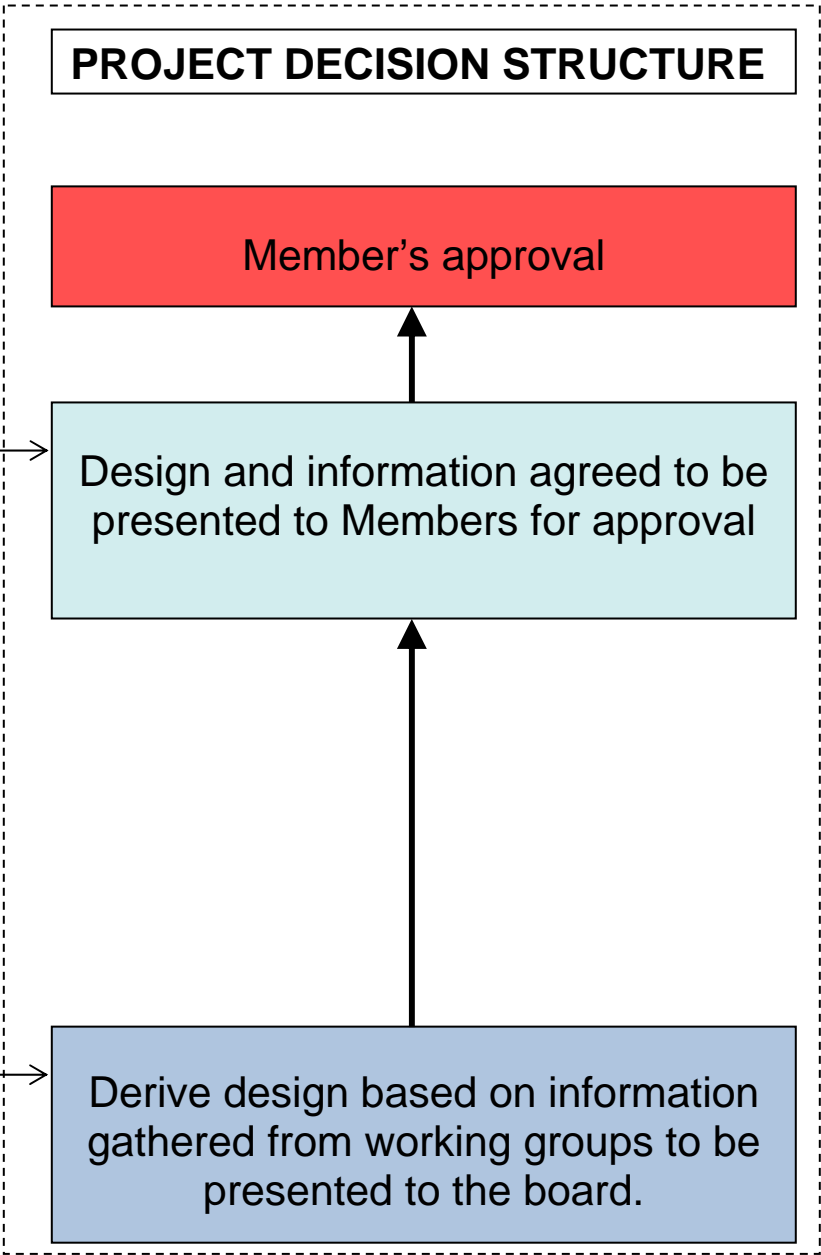
- Victor Callister (Assistant Director Environmental Enhancement CoL)	- Sarah Whitehorn (CoL Project Manager)	- Simon McGinn (CPAT CoL)
- Scott Lester (TfL Borough Projects and Programmes)	- Police Representative	- Julie Smith (Head of Finance CoL)
- Edward Moody (Minerva Ltd Developer)	- Esther Sumner (Town Clerk's Officer CoL)	- Roger Pye (Forward Planning TfL)
- Elise Boon (LBTH Manager of Improvement Works Group)	- Ian Hughes (Assistant Highways Director CoL)	- Fergus McGhee (London Buses TfL)
	- Neal Hounsell (Community & Children's Service CoL)	- John Cadman (LU TfL)

POLICE REVIEW GROUP

- British Transport Police
- CoL Traffic Management
- CoL Crime Prevention Design Team
- CoL Traffic and Environment Zone
- Metropolitan Police

London Fire Brigade Ambulance Service

Project Manager reports to Project Board & Review Groups



PROJECT DELIVERY TEAM
SARAH WHITEHORN: PROJECT MANAGER / CHAIRMAN

- Meet monthly
- Derive design to be presented to the board
- Day to day management of the Project
- Report writing / gain approval
- Implement Board Decisions
- Monitor and control development of the project (i.e. programme and budget)
- Promote and maintain focus on desired project outcome

GILLIAN HOWARD Comms Manager | **SARAH WHITEHORN Project Manager**

MICHELLE NEWELL Comms Officer / Project support

- Ben Manku
- Jon Wallace
- Simon Rollinson
- Mark Paddon
- Patrick Hegarty
- Jonathan Russell
- Melanie Charalambous

Working group updates reported to project delivery team by Project Manager.

WORKING GROUPS
SARAH WHITEHORN: PROJECT MANAGER / CHAIRMAN FOR ALL GROUPS TO COORDINATE INFORMATION SHARE AND MANAGE ANY PROGRAMME OR BUDGET SLIP / ISSUES

Subways	Structures	Environment	EE / Open Spaces: Group meet monthly	Developments	TfL Business Case
Construction and TM Phasing	Traffic and Environment Zone	Movement: Modelling, Cycling, Pedestrians, Buses			